

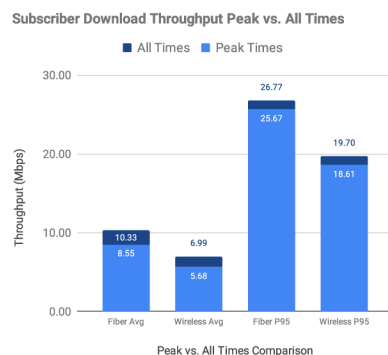
Fixed Wireless and Fiber Comparison

Spotlight on Throughput, Latency, and Subscriber Data Usage

Fiber is widely considered to be the gold standard for Internet distribution. However, it's expensive and time-consuming to install. Fixed Wireless is cost-effective and can be deployed rapidly. But what about the consumer experience? How do the two compare on subscriber metrics like throughput, latency, and data/speed plan usage?

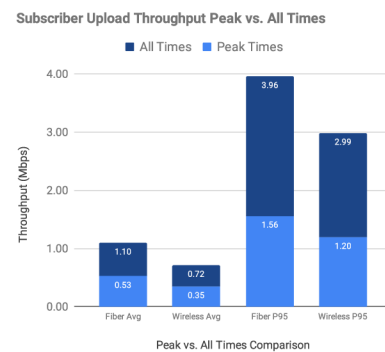
Download Throughput

Fiber achieves higher download throughput during peak and all times, though neither technology sees significant degradation at the busiest times.



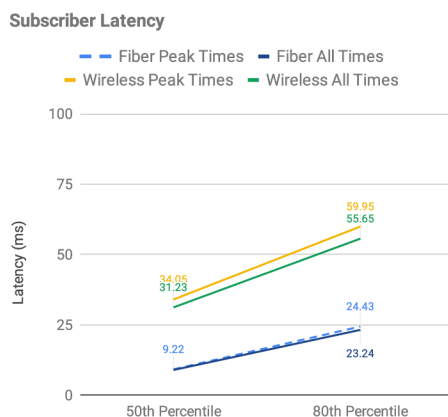
Upload Throughput

Compared to download speeds, upload speeds for individual users show a greater difference between peak and off-peak times.



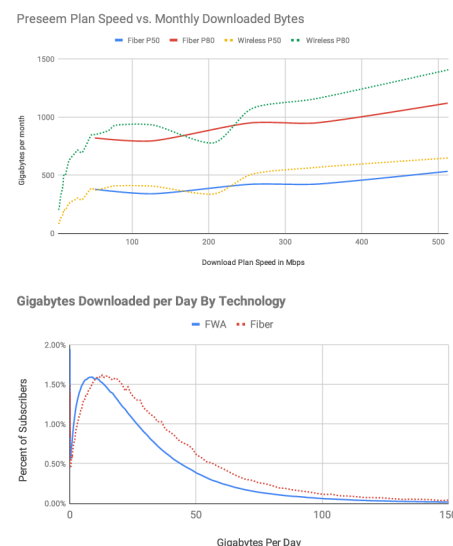
Latency

Latency for fiber subscribers is lower compared to FWA, though the latency difference between peak and off-peak times for both is relatively small. Peak latency overall is down 9% since our last report.



Subscriber Data and Plan Usage

Fiber users consume more than FWA (18GB/day compared to 12.7), but this is mainly due to having larger speed plans. Our data shows that the access technology makes very little difference to subscriber usage habits.



Download your free copy of the 2025 ISP Network Report for more metrics and insights on fixed wireless and fiber regional operators, vendors, subscriber behavior, and more.